

NEW! **WWE Domain Resin**

RNF146, Iduna!

Macrodomain Affinity Resin

AF1521!

**Anti-pADPr, clone 10H
AGAROSE**

PARP1, human
Highly active!

Anti-poly(ADP-ribose)
Clone 10H and polyclonal IgY!

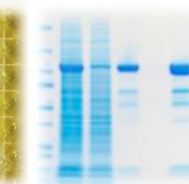
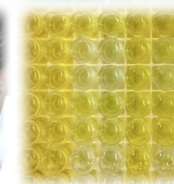
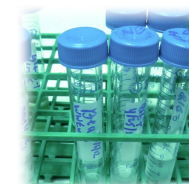
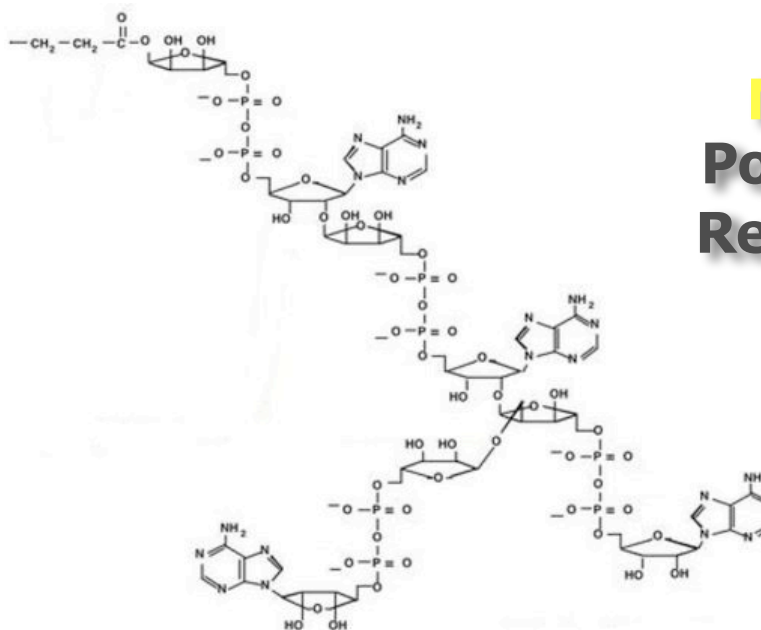
PARP1 PARsylated
Poly ADP-ribose standard!

**Get more info
and order online at
www.tulipbiolabs.com**

TULIP BIOLABS, INC.
PO Box 334
West Point, PA 19486 USA



**New Tools for
Poly(ADP-ribose)
Research**



Tulip Biolabs, Inc.
PO Box 334, West Point, PA 19486 USA
Phone/Fax: 610.584.2706
info@tulipbiolabs.com
www.tulipbiolabs.com

©2012 Tulip Biolabs, Inc.

PROTEINS

WWE domain (RNF146) **NEW!**

Isolation of PARsylated Proteins

Highly purified GST-WWE domain (RNF146 100-175; Iduna) fusion protein bound to glutathione beads. It is useful for affinity purification of PARsylated proteins from cell and tissue extracts. Each set (Cat. #4306) consists of the affinity resin (Cat. #2334) and negative control resin at 0.5 mg total protein each. Use 20 μ L (20 μ g) suspended resin to affinity purify/pull-down poly-ADP-ribose modified proteins. Analyze by Western blotting and other methods.

Order Catalog #4306 1 set/\$400

Order Catalog #2334 0.5 mg/\$300

PAR Affinity Resin Set (Af1521 Macrodomein)

Isolation of PARsylated Proteins

Highly purified GST-Af1521 macrodomain fusion protein bound to glutathione beads. It is useful for affinity purification of PARsylated proteins, and reported to bind mono-ADP-ribosylated proteins. Each set (Cat. #4301) consists of the affinity resin (Cat. #2302) and negative control resin at 1 mg total protein each.

Order Catalog #4301 1 set/\$400

Order Catalog #2302 1 mg/\$300

PARP1 Enzyme, human

Highly active enzyme

Highly purified human PARP1, expressed in a baculovirus expression system. Useful in high-throughput enzyme activity/inhibition assays, poly-ADP-ribosylation of target proteins, and other assays.

Order Catalog #2090 50 μ g/\$200

PARP1 Automodified, human

PARsylated PARP1 protein

Extensively poly-ADP-ribosylated human PARP1. Useful as a standard in several assay types.

Order Catalog #2095 5 μ g/\$90

ANTIBODIES

Anti-pADPr, clone 10H

Mouse monoclonal antibody

Recognizes poly(ADP-ribose). Useful for WB, IH, ELISA, and immunodot blot. Widely used, highly published.

Order Catalog #1020

50 μ g/\$60 200 μ g/\$175 1 mg/\$700

Anti-pADPr, clone 10H

AGAROSE

Anti-pADPr, clone 10H conjugated to CL-agarose via a 10-atom spacer. Supplied as 1 mg IgG conjugated to 0.5 mL CL-agarose in a 1:1 vol/vol slurry in PBS.

Order Catalog #1030 1 mg/\$425

Anti-pADPr, IgY

Chicken polyclonal antibody

Recognizes poly(ADP-ribose). Useful for WB, ELISA, and IH. Excellent sensitivity in WB.

Order Catalog #1023

50 μ g/\$60 200 μ g/\$175 1 mg/\$700

Get more info
and order online at
www.tulipbiolabs.com



Anti-PARP1, whole protein

Chicken polyclonal antibody

Recognizes intact PARP1, the 89kDa apoptosis-induced cleavage product, and other lower molecular weight apoptotic and necrotic fragments. Recognizes human, rat, and mouse. Great for detailed analysis of PARP1 fragmentation.

Order Catalog #1051

50 μ g/\$60 200 μ g/\$175 1 mg/\$700

ORDERING

Ordering Information

EASY-TO-ORDER

Please phone, fax, e-mail, or mail your order to the attention of customer service. Order by credit card online at www.tulipbiolabs.com.



LIMITATIONS

All products are available for research use only and are not approved for use in humans or for clinical diagnosis.

Please contact us for special orders and for pricing on bulk quantities. Discount of 20% for orders of 5 or more of a single size and item.

We
provide products
for Poly(ADP-Ribose)
research, including
proteins, antibodies,
and contract work.



Tulip
BioLabs

Tulip BioLabs, Inc.
PO Box 334, West Point, PA 19486 USA

Phone/Fax: 610.584.2706

info@tulipbiolabs.com

www.tulipbiolabs.com